



**NEW
RELEASE
INFORMATION
Vol.120**
08.06

ARMS M7760 TURBINE KIT for EJ Single scroll

EJ Single Scroll ARMS M7760 Turbo Kit



M7760



**100%
BOLT ON!!**

A CRUCIAL STEP IN EJ TUNING IS THE TURBO UPGRADE!

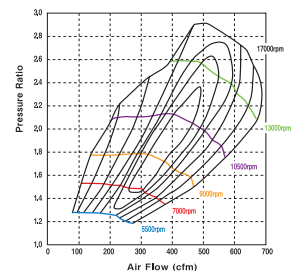
The ARMS M7760 is the largest bolt-on turbo possible that the engineers can fit into the limited space of the EJ engine. Despite the size, the internals of the turbocharger speaks other wise; extracting the most and finest efficiency from its design. The end result is a turbo that maintains the best characteristics of the EJ engine with the added benefit of an extended power band to the high RPM region. The crucial step in tuning the EJ is the turbocharger upgrade where the increase in overall performance can be acquired.

Features

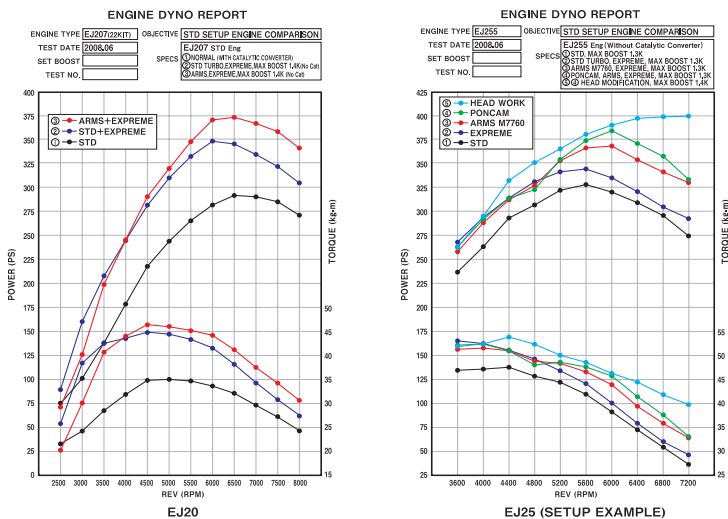
- Primary exhaust pressure at low RPMs remain identical to stock**
The boost build up is neither sluggish nor abrupt; we have designed this to be natural and smooth. This characteristic provides a stress free driving experience with easy vehicle operation.
- Response equal to stock trim**
Generally, a larger turbocharger relative to stock, results in decreased response of the engine. However, we have managed to keep the response equal to that of the stock trim by matching the most ideal turbine and compressor wheel. Countless hours of testing was of course performed to achieve these results.
- Increased peak power**
To achieve an increased peak power with the various restrictions such as the turbo size limit is considered a great achievement. We are also proud of the perfectly instant response where there is no lag and no abrupt boost pressures.
- Maintains boost pressure at high RPMs**
It is evident that the stock turbocharger cannot maintain or extend boost pressure above 5,500 RPMs. The M7760 has the capacity to far extend this limit, making it an ideal step for further advanced tuning.
- 100% Bolt-on**
The turbo kit comes complete with the necessary gaskets, plumbing, and hardware for easy installation. It can literally be bolted on right out of the box.

Flow Map

ARMS M7760 Compressor Flow Map



Efficiency Graph



DATA	TYPE	COMPRESSOR WHEEL TRIM	COMPRESSOR HOUSING Inlet (mm) / Outlet (mm)	TURBINE WHEEL TRIM	Main Dia (mm) / Ex Dia (mm)
	ARMS M7760	60	52.6 / 68.0	77	56.0 / 49.1

APPLICATION	PART #	MSRP
EJ SINGLE SCROLL	173016	\$1,780.00 (USD)

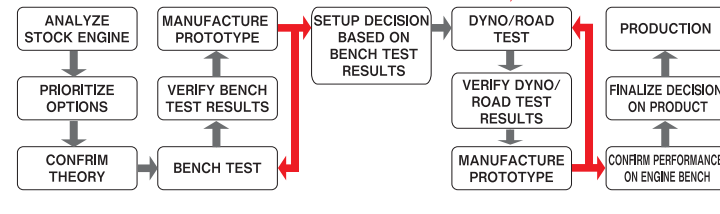
KIT CONTENTS Turbocharger, Water Pipes, Oil Return Pipe, Gaskets, Hardware

Dedicated Research & Development



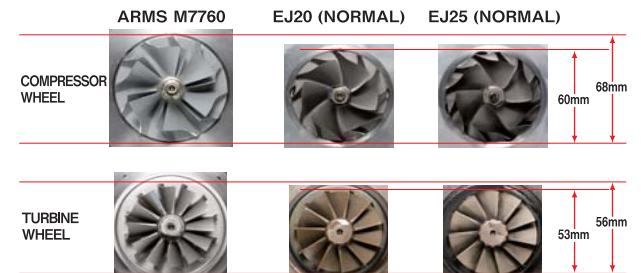
Countless hours of strict research and development is performed by our dedicated staff on all of our products to meet Tomei Powered's strict quality standards.

■ Tomei Powered's Strict Research and Development Process (Continued cycle → until performance meets criteria)



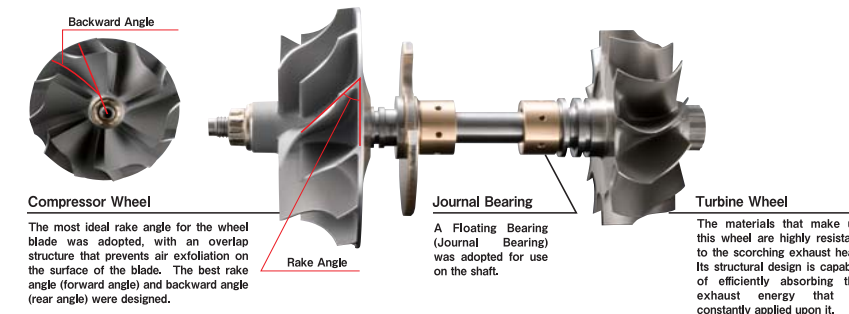
MONITORED FIELDS (SENSORS)	TURBINE	ENGINE CONDITION
	Intake Temp (Turbo Inlet & Outlet)	Water Temp
	Intake Pressure (Turbo Inlet & Outlet)	Oil Temp
	Exh. Temp (Turbo Inlet & Outlet)	Oil Pressure
	Exh. Pressure (Turbo Inlet & Outlet)	Fuel Pressure
	Boost Pressure	Knock
		Intake Air Temp
		Manifold Pressure

Stock Comparison



	ARMS M7760	EJ20 (NORMAL)	EJ25 (NORMAL)
Compressor Wheel Outer Diameter	68mm	60mm	60mm
Turbine Wheel Outer Diameter	56mm	53mm	53mm

Internal Component Analysis



Naming & Design

ARMS M7760

M Indicates the Floating Bearing
77 Indicates Turbine Wheel Trim
60 Indicates Compressor Wheel Trim



Tomei's exclusive turbocharger is molded with our very own logo on the housing, and also comes with the signature ARMS stamp.

EJ25 Modification Stages

The horizontally opposed EJ25 is known for being troublesome in terms of modifications, especially when it comes to swapping the camshafts and engine internals. The engine assembly is required to be taken out of the vehicle in order to reach inside the engine. For the end user, it is most effective to first modify the intake system considering the high degree of difficulty and expense involved in fully tuning a boxer. Tomei Powered recommends a turbocharger upgrade after the intake system has been modified.

Stock	Power drop above 5,500 RPM	328 HP
EXPREME Exhaust Manifold	Simple bolt-on exhaust manifold upgrade	345 HP
ARMS M7760	Despite size limit, most efficient turbo design achieved	369 HP
PONCAMS	Increased intake air volume with most ideal duration	385 HP
Head Modification	Air intake restriction eliminated, objective cleared	400 HP

Head Intake Port Comparison: EJ207 (31mm) vs EJ255 (27mm)

EJ207 Combustion Chamber Modification: 62.0mm vs 68.0mm

※EJ25 is equipped with a restrictive head design resulting in the air intake to be maxed out at 6000 RPM. Tomei Powered has utilized a modified EJ207 head, boring out the combustion chamber diameter to match the cylinder diameter; all done to achieve superb

Misc. Products

FUEL PUMP FUEL PUMP CONTENTS: Fuel Pump, Filter, Retainer, Insulator, Wire Harness, Wire terminal, Hose, Hose Band, Rubber Cushion, Tie Wrap \$220.00 (USD) PART NO.: 183020	CONNECTING ROD FORGED H-BEAM CONNECTING RODS \$970.00 (USD) PART NO.: 125008
--	---

REPLACEMENT KIT

When the turbine has been removed for maintenance or for repairs we have also made replacement parts easy to obtain without buying a whole kit again.

- Kit Contents:**
- Water Pipe X2
 - For Water Pipes Eye Bolt X2
 - Eye Bolt Gaskets X4
 - Oil Return Pipe Bolt
 - For Oil Return Pipe Bolt Gasket
 - For Exhaust Inlet Gasket
 - For Exhaust Outlet Gasket
 - For Oil Inlet Pipe Eye Bolt
 - Eye Bolt Gasket X2
 - For Turbo Outlet Pipe Sludd Bolt & Nut X3



\$120.00 (USD)
PART NO.: 1741S00010

INJECTORS
OVERSIZED INJECTORS
SIDE FEED 740cc (EJ25)
\$640.00 (USD)
PART NO.: 193023
※85cc suited for 2.0L / 2.2L applications

TOMEI POWERED USA INC.

13 ORCHARD SUITE 107, LAKE FOREST, CA 92630 USA
TEL: +1-949-855-6577 FAX: +1-949-855-6577 URL: <http://www.tomeiusa.com>

Prices are subjected to changes without prior notice. The images are for illustration purposes only & the color may differ from the actual product due to printing and publication errors.

Visit Our Website For More Info <http://www.tomei-p.co.jp/> More info on M7760 coming soon!